

15-1

GLACIER NATIONAL PARK

Season June 15th to September 15th,

1925

Circular No. 50-25

Information Regarding
HOTEL AND CAMP ACCOMMODATIONS
TRANSPORTATION RATES
AND TOURS, ETC.



A. J. DICKINSON,
Passenger Traffic Manager,
St. Paul, Minn.

GREAT NORTHERN RAILWAY

Printed in U. S. A.

INDEX

	Page
Accommodations—Hotels and Chalets.....	3 and 4
Automobile and Launch Service and Rates.....	6
Baggage.....	5
Belton Chalets.....	4
Belton-Lake McDonald Auto Stage.....	6
Cut Bank Chalets.....	3
Daily Flat Rate Horseback Service.....	7
Automobile Service, Glacier Park Hotel to Two Medicine Chalet, St. Mary Chalet, and Many-Glacier Hotel.....	6
Fish and Fishing.....	8
Flat Rate Horseback Service.....	7
Freight Rates on Automobiles Between Glacier Park Station and Belton.....	5
Glacier Park Hotel.....	3
Glacier Park Hotel Company's Chalet Groups.....	3 and 4
Going-to-the-Sun Chalets.....	4
Granite Park Chalets.....	4
Guides, Rates for.....	7
Hotels and Chalets.....	3 and 4
Horses—Rates for Saddle and Pack Horses.....	7
Launch—Service on Lake St. Mary and Rates therefor.....	6
Laundry Facilities.....	4
Location and Scenic Features, Glacier National Park.....	3
Mail.....	5
Many-Glacier Chalets.....	4
Many-Glacier Hotel.....	3
Pack Horses—Rates for.....	7
Rates—Children.....	4
Glacier Park Hotel.....	3
Resorts on Lake McDonald.....	4
Guides.....	7
Saddle Horses.....	7
Pack Horses.....	7
Automobile Service.....	6
Launch Service.....	6
Horseback Tours, per day.....	7
For one to seven day tours.....	13
1 Day Tours.....	9
2 " ".....	9
3 " ".....	9
4 " ".....	10
5 " ".....	10
6 " ".....	11
7 " ".....	12
Row Boats on Two Medicine, St. Mary and McDermott Lakes.....	6
St. Mary Chalets.....	3
Side Trips—From Glacier Park Hotel.....	7
" " " Many-Glacier Hotel.....	7
" " " Going-to-the-Sun Chalets.....	7
" " " Lake McDonald.....	7
Sperry Glacier Chalets.....	4
Stop-overs on Railroad Tickets.....	5
Telephone and Telegraph Service.....	5
Tours of One to Seven Days.....	9, 10, 11, 12 and 13
Transportation Facilities.....	6 and 7
Travelers Checks.....	4
Two Medicine Chalets.....	3
Validation of Ticket.....	5
Walking Tours.....	5
What to Wear.....	5

GLACIER NATIONAL PARK

Location and Scenic Features:

Glacier National Park is a mountain region of marvelous scenic beauty, covering an area of over 1,500 square miles. The main range of the Rocky Mountains extends from north to south through the entire park. There are over sixty living glaciers in the park of which Blackfeet, Sperry, Red Eagle and Grinnell Glaciers are easily accessible. It contains over 250 mountain lakes of which Lake St. Mary, on the east, is one of the largest, being about 10 miles long. Trout abound in many of the lakes and streams and afford splendid fly fishing. It is located in Northwestern Montana on the main transcontinental line of the Great Northern Ry. Distance from St. Paul, 1,081 miles, from Chicago, 1,512 miles, from Portland, 678 miles, from Seattle, 637 miles, from Spokane, 298 miles.

Through sleeping car service is available from Chicago, St. Paul, Minneapolis, Kansas City, Spokane, Seattle, Tacoma, Portland and intermediate points via Burlington—Great Northern Ry.

THE GLACIER PARK HOTEL COMPANY, under concession from the United States Government, Department of Interior, has built and operates several hotels and Chalets in the park as follows:

Glacier Park Hotel: An attractive rest and recreative resort for the comfort and convenience of tourists entering and leaving the Park.

Located at Glacier Park Station, 600 feet from the depot—200 rooms, accommodations for over 400 people—electric lighted, steam heat, running water, rooms with private bath, cuisine and service of high order, plunge pool, shower baths, sun parlor, open camp fire in lobby, lounging and music room. Large verandas face the main range of the Rocky Mountains. Saddle horse trips, Auto trips, Hiking trips—starting point for trips in Park.

Many-Glacier Hotel:

Located in a very scenic region of the park, on the east shore of Lake McDermott, 55 miles north of Glacier Park Hotel, at end of automobile highway. Automobile stage service to and from Glacier Park Hotel daily. A rustic resort built of native stone and timber. This hotel contains accommodations for upwards of 500 guests—electric lighted, steam heated, running water, rooms with bath—dining service of high standard. This is the focal point for many trail trips to points of interest and to the passes.

Hotel Rates:

The hotel rates are American plan per person per day. Rates at Glacier Park Hotel and Many-Glacier Hotel \$6.00 per day for accommodations in rooms without bath. \$8.00, \$9.00 and \$10.00 per day with bath, dependent on location. There are a few rooms at \$7.00 per day. For exclusive use of a room with bath by one person \$1.00 per day higher is charged. Room use for any part of a day, without bath, \$1.00; room use for any part of day with bath, \$2.00. Meal rate: Breakfast \$1.25, Luncheon \$1.25, Dinner \$1.50.

Basis of Rates:

Hotel rates will be computed on the basis of \$1.25 for breakfast, \$1.25 for luncheon and \$1.50 for dinner plus the lodging value which is \$2.00 and upward for lodging, according to class of accommodations; for instance—on the basis of \$6.00 per day one half day consisting of lodging and breakfast would be \$3.25, viz.: \$2.00 for room and \$1.25 for breakfast. Similarly at \$8.00 per day, dinner, lodging and breakfast would be \$6.75, viz.: \$1.50 for dinner, \$4.00 for lodging and \$1.25 for breakfast. All fractions of a day will be arrived at on this basis, **not by dividing the day rate into halves or quarters.**

Chalet Camps:

Throughout Glacier National Park, distant from ten to eighteen miles from each other, the Glacier Park Hotel Company maintains and operates the following permanent Swiss chalets or small hotels. Rates at chalets \$4.50 and \$5.00 per day, American plan, viz.: \$1.00 for breakfast, \$1.25 for luncheon, \$1.25 for dinner, \$1.00 and \$1.50 for lodging. See rates for each chalet below.

Each of these artistic chalet groups consist of rustic log or stone buildings, attractively grouped, in vicinity of a central structure used for a dining and lounging room. Most of the sleeping Chalets have one or more attractive lounging rooms, equipped with large stone fireplaces. The camps have no rooms with bath but detached bath rooms are available at several camps. The service is plain and simple, the object of the management being to furnish clean, comfortable beds, plain food, well cooked, plenty of it, and served in family style. The Chalets are unusually attractive and comfortable and those desiring a vacation of several weeks will find them very economical.

LOCATION OF CHALETs.

Two Medicine Chalets:

Located on lower end of the middle Two Medicine Lake. Reached by automobile, horseback, or afoot. 12 miles from Glacier Park Hotel. This camp has a large chalet dormitory containing spacious lounging room and guest rooms and several smaller buildings. Detached shower or tub baths, 50 cents. Capacity 100 guests.

Rates \$4.50 per day. \$28.00 per week.

Cut Bank Chalets:

Located in the Cut Bank Valley, 22 miles from Glacier Park Hotel, a popular rendezvous for fishermen. From this camp it is a day's side trip to Triple Divide Mountain where the water flows three ways.

Capacity 45 guests.

Rates \$4.50 per day or \$28.00 per week.

Open July 1st to Sept. 1st, only.

St. Mary Chalets:

Located on lower end of upper St. Mary Lake, 32 miles from Glacier Park Hotel. The popular going in point for all tourists visiting the Going-to-the-Sun and Many-Glacier regions. Good fishing, trail walks, boating and launch trips. Side trip is made from here to Red Eagle Lake, a popular fishing trip. Detached shower or tub baths, 50 cents. Capacity 100 guests.

Rates \$4.50 per day, \$28.00 per week. A special weekly rate of \$22.75 per week is made at this chalet only for parties staying two weeks or more.

LOCATION OF CHALETS—Continued.

- Going-to-the-Sun Chalets:** Located on the northwest shore of St. Mary Lake, 9 miles up lake from St. Mary Chalets, commanding a view of the Continental Divide. Reached by boat from St. Mary Chalets, or afoot or horseback from Many-Glacier, Granite Park and Sperry Chalets. Detached shower or tub baths, 50 cents. Capacity 150 guests.
Rates \$4.50 and \$5.00 per day according to location of room.
- Many-Glacier Chalets:** Located one-quarter of a mile from Many-Glacier Hotel. Side trips from this point same as from Many-Glacier Hotel. Lodgings only are furnished at \$1.00 per night. Guests take such meals as desired at hotel dining room in Many-Glacier Hotel, at regular rates, \$1.25 for breakfast, \$1.25 lunch, \$1.50 dinner.
- Granite Park Chalets:** Located on the west side of the Continental Divide in Granite Park. Reached by horseback or afoot from Many-Glacier Hotel via Swift Current Pass. Comprises two stone Chalets. Capacity 100 guests. This is an overnight stopping place for trail parties making triangle or circle trips.
Rates \$4.50 per day. Open July 1st to Sept. 1st only.
- Sperry Glacier Chalets:** Located on the west side of the Continental Divide, near Sperry Glacier. Reached by horseback or afoot from Going-to-the-Sun Chalets or Lake McDonald. Capacity 75 guests.
Rates \$4.50 per day. Open July 1st to Sept. 1st only.
- Belton Chalets:** Located 100 feet from the depot at Belton station, the western entrance to the park. On the west side of the Continental Divide, fifty-eight miles west of Glacier Park Station. Detached shower or tub baths, 50 cents. Capacity 125 guests.
Rates \$4.50 and \$5.00 per day according to room. \$28.00 per week.
- Rates for Children:** The following rates are authorized for children at above named Hotels and Chalets in Glacier National Park when accompanied by parents or guardians:
Children eight years of age and over, full rate.
Children under eight years of age, one-half rate if not occupying separate room.
- Laundry Facilities:** The Glacier Park Hotel Company operates a laundry at Glacier Park Hotel. Tourists can have laundry sent or left there to be called for on leaving the Park.
- Medical Service:** A physician is located at Glacier Park Hotel. A trained nurse is stationed at Glacier Park Hotel, another at Many-Glacier Hotel. Their services are available at all times at standard professional rates. A line of medical and surgical supplies is carried in the dispensary at each hotel. The rates charged for medical services are the standard Montana rates as authorized by the National Park Service.
- Travelers Checks:** Guests should provide themselves with travelers checks. Personal checks cannot be honored. Travelers checks save you time.

LAKE McDONALD RESORTS.

- Resorts and Transportation Facilities on Lake McDonald:** Belton, Mont., is the Gateway to Lake McDonald and the western entrance to the Park. The Belton Chalets (see above) provide accommodations at the entrance. Resorts on Lake McDonald include:
- * Lewis' (Glacier) Hotel, 13 miles from Belton near head of Lake McDonald, Proprietor, J. E. Lewis, Lake McDonald, Mont. Log Hotel of pleasing style of rustic architecture containing 64 rooms. Spacious lounging room; open fire in lobby; large veranda facing Lake McDonald. Hotel is equipped with private baths and laundry, and additional accommodations furnished in 20 log cabins. Reached direct by auto from Belton (13 miles) or by boat from foot of lake. Hotel rates \$6.00, \$7.00, \$8.00 and \$9.00 per day.
 - * National Park Cabin, at foot of Lake McDonald. Proprietor, Mrs. R. H. Haworth, Belton, Mont. Two and three room log cabins equipped for light housekeeping. Reached by auto from Belton (3 miles). Rates \$45.00 to \$60.00 per month. \$95.00 to \$125.00 per season of three months.
 - * Park Cabin Resort (Geduhn's) at head of Lake McDonald. Proprietor, James Conlon, trustee, Belton-Mont. Ten log cabins. Reached by auto from Belton (3 miles), thence by launch (9 miles). Rates \$50.00 to \$175.00 each per season.
 - * Alpine Boys Camp on the west shore of Lake McDonald, for boys ranging in age from 12 to 18, opens July 1st, for a period of six weeks. The camp consists of a lodge and five log cabins. Carefully supervised instruction and recreation under the direction of experienced leaders. Tuition for the six weeks including a trip through the entire park on horseback, \$350.00. Director, Roger E. Hand, 2111 East 47th., Seattle, Washington, or after June 15th, Belton, Montana.
- Skyland Camp on Bowman Lake:** A camp for boys has been established on Bowman Lake. Bowman Lake has good fishing. Camp consists of several attractive log buildings and some sleeping tents. While primarily established as a boys' summer camp tourists are welcome and will be well taken care of. Camp rates including practical instruction, use of horse, etc., \$50.00 per week. Camp rate, meals and lodging only, \$4.50 per day. Address Skyland Camp, Culver, Indiana, or after June 1st, Kintla, Mont.
- * These resorts are not operated by the Glacier Park Hotel Company, and rates are compiled from latest information available, but responsibility for correctness is not assumed.

Walking Tours:

Walking tours are inexpensive and are popular with people who like the more strenuous form of vacation trip. Glacier Park Hotel Company's Chalet Camps are located within a day's walk of each other ranging from 10 to 18 miles apart. Walking tours can be made at a cost of \$4.50 per day by using the Chalet Groups, giving an opportunity for "Hikers" to make their trips without the necessity of carrying camp outfit.

Another inexpensive way to tour the park is to carry a knapsack with a few cooking utensils and do your own cooking; bread, meat and canned goods can be purchased at any hotel or Chalet. By using the Chalets for lodgings only at regular rate of \$1.00 per night, and stopping along the streams or on the shores of the lakes and cooking over a camp fire, the park can be toured for approximately \$2.50 per day.

What to Wear:

As a rule tourists are inclined to carry too much in the way of baggage on trail trips. There are no conventionalities in Glacier Park—outing clothes are the rule and stout shoes are necessary, warm clothing is essential as it is generally cool in the mountains. For a week or two weeks' trip, either afoot or horseback, the following list is about all that is required:

- | | |
|--|---|
| 1 Suit of warm outing clothes. | 1 Pair stout lace shoes or hiking shoes. Do not use hob nails or calks in shoes or boots except on hiking trips. They are not necessary, are dangerous if Horseback Riding and are not allowed in Lobby or Dining Room of Hotels. |
| 1 Pair riding breeches or knickerbockers. | |
| 1 Sweater or wool jacket. | |
| 2 Suits of underwear, either heavy cotton or light weight woolen. | 1 Pair canvas leggings, puttees or golf stockings. |
| 3 Pairs of wool socks. | 2 Pair of cotton, wool or leather gloves. |
| 1 Rubber blanket or rain coat, if on walking tour. Water proof slickers are furnished free with saddle horses. | 1 Felt hat or cap. |
| | 1 Cloth dunnage bag. |

Women should have either stout shoes or boots and knickerbockers or riding breeches.

Do not wear low shoes or high heel shoes or thin silk stockings if riding or walking the trails.

Haversacks or cloth dunnage bags can be purchased at Glacier Park. "Saddle" slickers are furnished free with all saddle horses. The slicker is always kept on the saddle ready for immediate use in case of rain. A pair of amber goggles are a good thing to protect one's eyes when on the glaciers or snow fields.

The most comfortable footwear is heavy winter shoes or outing boots of soft leather. Wear heavy wool socks if doing much walking. If you cannot stand the wool next to the skin use light weight cotton socks and draw the wool ones over.

Outing Clothing On Sale:

Suitable outing clothing can be purchased at Glacier Park Hotel, Many-Glacier Hotel or at Going-to-the-Sun Chalets at reasonable prices.

Mail should be addressed care of Glacier Park Hotel, Glacier Park, Mont.—this is the post office for Glacier Park Hotel. Mail will be forwarded to other points in Park if forwarding address is left with mail clerk. It is important that guests fill out a mail forwarding card so mail clerk can locate them after leaving Glacier Park Hotel.

Mail:**Telegraph and Telephone Service:**

Telegrams may be addressed to tourists at Glacier Park, Mont.

The various hotels and Chalet groups are connected by telephone with Glacier Park station so that communication may be had with the Hotels or any Chalets at all times. Guests may use the phone in accordance with phone tariff. Telegrams received at Glacier Park Hotel will be forwarded by phone at regular phone tariff rate. The telegraph station for Lake McDonald is Belton, Mont.

Stopovers on Railroad Tickets:

All one-way and round-trip tickets, are good for stopover at Glacier Park Station and Belton. On one-way tickets length of stopover must not exceed 10 days from date that stopover is made as endorsed on back of ticket by Conductor into Glacier Park or Belton. Passengers must hold evidence that trip has been made through the Park, which must be presented to Agent at Glacier Park or Belton, when passenger is ready to resume journey. Agents will attach stopover certificate to ticket extending the limit number of days passenger has stopped. On round-trip tickets stopovers will be allowed regardless of limits, during park season (June 15th to September 15th). Upon application to conductors stopovers will be permitted at Glacier Park points on all Summer Tourists and Special Excursion Tickets to Pacific Coast and intermediate destinations.

Validation of Tickets:

Summer Tourists tickets to Glacier Park Station or Belton must be validated for return passage at destination not later than 30 minutes prior to departure of train which passenger is to use returning. Tickets will be honored from Glacier Park Station or Belton regardless of destination of ticket.

Baggage Storage:

Storage charge on baggage will be waived at Glacier Park Station and at Belton while passengers are making Park tours.

Baggage:

The following rates apply for the transportation of baggage between points in Glacier National Park in auto express service. Auto stages are not equipped to handle heavy baggage and same must go on first auto trucks following, but time of delivery is not guaranteed under any circumstances. When tourists walk or use saddle horse between two points and have baggage shipped by auto the following rates are charged:

	Between	Baggage Rate	
		Trunk	Suit Case or Grip
Glacier Park Station.....	and Glacier Park Hotel.....	\$.50	No charge
Glacier Park Hotel.....	" Two Medicine Chalets.....	1.00	\$.50
Glacier Park Hotel.....	" St. Mary Chalets.....	2.00	.50
Glacier Park Hotel.....	" Many-Glacier Hotel.....	4.00	1.00
Glacier Park Hotel.....	" Going-to-the-Sun Chalets.....	2.50	.75
Many-Glacier Hotel.....	" Going-to-the-Sun Chalets.....	2.50	.75
St. Mary Chalets.....	" Going-to-the-Sun Chalets.....	.50	.25
St. Mary Chalets.....	" Many-Glacier Hotel.....	2.00	.50
Belton Chalets.....	" Lewis' Hotel.....	1.00	.50
Belton Chalets.....	" Foot of Lake McDonald.....	.50	.25
Foot of Lake McDonald.....	" Head of Lake McDonald.....	.50	.25

25 Pounds Baggage Free on Auto, Stage or Boat:

Passengers touring Park will be permitted to carry with them free on automobiles, stages or launches, one piece of hand baggage weighing not to exceed twenty-five pounds.

Freight Rates on Automobiles Between Glacier Park Station and Belton:

An automobile highway has been perfected through from Duluth, St. Paul, Minneapolis and Grand Forks, N. D., to Glacier Park Station. This is the Route followed by the Glidden tour in 1913. From Belton, Montana, the automobile highway extends west, via Kalispell, Libby and Bonners' Ferry to Spokane and the Pacific Coast. For the convenience of automobilists who desire to make the overland trip in their cars the Great Northern Railway will have in effect during the Park season a charge of \$14.06 for handling automobiles between Glacier Park Station and Belton in either direction. By this means tourists may ship their cars over the mountains at Glacier Park after having made the trip over the 55 mile automobile road from Glacier Park Hotel to Many-Glacier Hotel and back, resuming their transcontinental auto tour at Belton. Similar service Belton to Glacier Park Station.

AUTO STAGE AND BOAT SERVICE AND RATES.

Automobile Service Between Glacier Park Hotel and St. Mary Chalets and Many-Glacier Hotel: THE GLACIER PARK TRANSPORTATION COMPANY, a corporation under concession from the United States Department of the Interior, furnishes automobile service in the Park. Comfortable six and eleven passenger White automobiles are used in this service.

Daily auto-stage service will be maintained between Glacier Park Hotel, St. Mary Chalets and Many-Glacier Hotel on the following schedule during the park season:

Northbound			
Leave Glacier Park Hotel.....	8:00 a. m.		1:30 p. m.
Arrive St. Mary Chalets.....	10:20 a. m.		3:50 p. m.
Leave St. Mary Chalets.....	10:40 a. m.		4:10 p. m.
Arrive Many-Glacier Hotel.....	12:15 p. m.		5:45 p. m.
Southbound			
Leave Many-Glacier Hotel.....	8:15 a. m.		1:45 p. m.
Arrive St. Mary Chalets.....	9:50 a. m.		3:20 p. m.
Leave St. Mary Chalets.....	10:10 a. m.		3:40 p. m.
Arrive Glacier Park Hotel.....	12:30 p. m.		6:00 p. m.

Automobile Service Glacier Park Hotel and Two Medicine Chalets: Regular one round trip a day service will be maintained between Glacier Park Hotel and Two Medicine Chalets on the following schedule:

Leave Glacier Park Hotel.....	1:15 p. m.
Stop at Trick Falls.....	
Arrive Two Medicine Chalets.....	2:30 p. m.
Leave Two Medicine Chalets.....	5:00 p. m.
Arrive Glacier Park Hotel.....	6:00 p. m.

Daily auto service will be maintained between Belton and Lewis' Hotel as follows:

Automobile Service Belton, Lake McDonald:	Read Down		Read Up	
	8:00 a. m.	10:30 a. m.	6:30 p. m.	Lv. Belton.....Ar. 9:00 a. m.
	8:15 a. m.	10:45 a. m.	6:45 p. m.	Lv. Foot of Lake McDonald..Lv. 8:45 a. m.
	9:00 a. m.	11:30 a. m.	7:30 p. m.	Ar. Lewis' Hotel.....Lv. 8:00 a. m.

Boat service on Lake McDonald connects with autos to and from Belton at foot of Lake McDonald, fare one way 75 cents. Round trip \$1.50.
Round trip, from Belton, one way auto and returning via boat \$3.25.

Automobile Rates:

For the above service, the following trip rates will apply between points named:

Between	One Way	Round Trip
Glacier Park Hotel and St. Mary Chalets.....	\$4.00	\$ 8.00
Glacier Park Hotel and Many-Glacier Hotel.....	7.50	15.00
St. Mary Chalets and Many-Glacier Hotel.....	3.50	7.00
Glacier Park Hotel and Two Medicine Chalets.....	2.00	3.50
Glacier Park Hotel and Two Medicine and return including launch....		4.25
*Glacier Park Hotel and Cut Bank Chalets.....		5.00
Belton and Foot of Lake McDonald.....	.50	1.00
Foot of Lake McDonald and Lewis' Hotel.....	1.50	3.00
Belton and Lewis' Hotel (applies also one way via launch).....	2.00	3.25

*No regular daily between these points, rate applies only for minimum of four round-trip fares.

Above fares include transportation of one piece of hand baggage not exceeding 25 lbs. weight if accompanied by passenger. Children under eight years carried free, over eight full fare.

Automobile Trip Rental:

Tourists desiring to rent private automobiles for special trips from Glacier Park Hotel or Many-Glacier Hotel may secure them from the Glacier Park Transportation Co. This service may be had only when cars are available without interrupting regular service. Charge is on the basis of 80 cents a mile for the round trip, with a minimum charge of \$40.00. There will be an additional charge of \$4.00 per hour for touring cars chartered by special parties for every idle hour during the company's working day, which is from 7 a. m. to 7 p. m. No charge will be made after 7 p. m. until 7 a. m. the following morning. No cars will be chartered for more than one day, except by special arrangement with the automobile company. Cars will not be chartered for one-way trips.

A flat charge between Glacier Park and other points for special cars operating in charter service will be as follows:

Glacier Park Hotel to Two Medicine Chalets and return.....	\$20
Glacier Park Hotel to Cut Bank Chalets and return.....	35
Glacier Park Hotel to St. Mary Chalets and return.....	50
Glacier Park Hotel to Many-Glacier Hotel and return (if made within 24 hours)....	85

Launch Service:

A launch of 150 passenger capacity is operated on St. Mary Lake between St. Mary Chalets and Going-to-the-Sun Chalets—distance 10 miles—time one hour. Fare One Way 75 cents, Round Trip \$1.50. Service will be regularly maintained between these points during the Park season, on the following schedule, arranged to connect with the automobile service at St. Mary Chalets.

Leave St. Mary Chalets.....	11:00 a. m.	5:00 p. m.
Arrive Going-to-the-Sun Chalets.....	12:00 noon.	6:00 p. m.
Leave Going-to-the-Sun Chalets.....	2:00 p. m.	8:00 a. m.
Arrive St. Mary Chalets.....	3:00 p. m.	9:00 a. m.

A launch on Two Medicine Lake makes excursions around lake, fare 75 cents.

Row Boats on Two Medicine, St. Mary, McDermott, Josephine:

A launch on McDermott and Josephine Lakes makes excursions (1 hour), fare \$1.00 round trip. Row boats on Two Medicine, St. Mary and McDermott Lakes may be rented for 50 cents per hour or \$2.50 per day. \$15.00 per week. Fishing tackle consisting of rod, reel and line can be rented at Two Medicine, St. Mary, Going-to-the-Sun and Many-Glacier for 50 cents per day.

SADDLE HORSE, PACK HORSE AND GUIDE RATES.

Rates of the Park Saddle Horse Company:

THE PARK SADDLE HORSE COMPANY, the licensed outfitters of the Park, furnishes saddle horses, pack horses and guides under concession from the United States Government, also equipment for independent camping tours. Horses can be secured or released at Glacier Park Hotel, Many-Glacier Hotel, Going-to-the-Sun Camp, Two Medicine Chalets and Lewis' Hotel on Lake McDonald. The following trips from various Hotels and Chalets are available under conditions mentioned. The charge includes Horse and Guide Service—All of the whole day trips start between 8:00 and 9:00 a. m., the afternoon trips at 1:30 p. m.

		Rate	Minimum number required in party
From Glacier Park Hotel:	Regular Trips Daily		
	*Glacier Park Hotel to Mt. Henry and return—One-day trip.....	\$ 4.00	1
	Special Trips		
	*Glacier Park Hotel to Two Medicine and return—Two-day trip via Mt. Henry in one direction.....	7.00	3
	Inside Trail Trip—via Two Medicine, Mt. Morgan, Cut Bank Chalets, Triple Divide, Red Eagle Lake, St. Mary Chalets, Going-to-the-Sun Camp, Piegan Pass to Many-Glacier Hotel—A five day scenic trip.....	18.00	5
From Many-Glacier Hotel:	Regular Trips Daily		
	*Iceberg Lake and return—One-day trip.....	4.00	1
	Cracker Lake and return—One-day trip.....	4.00	1
	Granite Park and return—One-day trip.....	5.00	1
	Piegan Pass and return—One-day trip.....	4.00	3
	Going-to-the-Sun Chalets via Piegan Pass—One way.....	5.00	1
	Garden Wall Triangle trip via Swift Current Pass, Granite Park, Logan Pass, Going-to-the-Sun and Piegan Pass—Three-day trip.....	12.50	1
	Special Trips.		
	*Ptarmigan Lake and return—One-day trip.....	4.00	3
	*Grinnell Lake and return—One-half day trip (afternoon).....	3.00	3
Grinnell Glacier and return—One-day trip.....	4.00	3	
	Five-day Circle trip; from Many-Glacier Hotel via Swift Current Pass to Granite Park; thence to Lake McDonald—Sperry Chalets—Going-to-the-Sun Chalets and return via Piegan Pass to Many-Glacier Hotel. This trip can also be started from Lake McDonald or Going-to-the-Sun Chalets, returning to starting points. No refund can be made if parties drop out before completing trip.....	25.00	5
From Going-to-the-Sun Chalets:	Regular Trips Daily		
	*Sexton Glacier and return—One-day trip.....	4.00	1
	Triangle trip via Piegan Pass, Many-Glacier Hotel, Swift Current Pass and Granite Park Chalet and Logan Pass to Going-to-the-Sun Chalet—Three-day trip. No refund allowed in case of withdrawal before completing trip..	12.50	1
	Many Glacier Hotel via Piegan Pass.....	5.00	1
	Special Trip		
	*Gunsight Lake and return—One-day trip.....	4.00	3
	Roes Basin and return—One-day trip.....	4.00	3
Lake McDonald via Sperry Chalets and Gunsight Pass—Two-day trip....	10.00	1	
Five-day Circle trip as above.....	25.00	5	
From Two Medicine Chalets:	Regular Trips—July 15 to Sept 1 only.		
	Mt. Henry and return—One-day trip.....	4.00	1
	Upper Two Medicine and return (without guide)—One-day trip.....	3.50	1
	Special Trips—July 15 to Sept. 1 only.		
	Mt. Morgan Pass and return—One-day trip.....	4.00	3
	Dawson Pass and return—One-day trip.....	4.00	3
	Two Medicine Chalets to Glacier Park Hotel—One-day trip.....	4.00	3
	Upper Two Medicine Lake and return—One-day trip.....	4.00	3
From Lake McDonald:	Regular Trips		
	*Sperry Chalets and return—One-day trip.....	4.50	1
	Lincoln Peak and return—One-day trip.....	5.00	1
	Special Trips		
	*Alvalanche Basin and return—One-day trip.....	4.00	3
	Snyder Lake and return—One-day trip.....	4.00	3
	Going-to-the-Sun Chalets via Sperry and Gunsight Pass—Two-day trip....	10.00	1
Five-day Circle trip as above.....	25.00	5	
	NOTE: Trips marked () made daily during season. Other trips, except from Two Medicine, available July 1st to September 1st. Park rules require one guide for every ten persons.		
	All saddle horses are required to be equipped with waterproof slickers which outfitters supply free. Reservations for Saddle Horse Trips must be made 12 hours in advance.		
Day Rates for Horses and Guides:	For non-scheduled trips—Saddle and Pack Horses.....	3.50	Per Day
	General Guides, including Guide's horse and board.....	10.00	Per Day
	Limited Guides—including Guide, horse and board.....	8.00	Per Day

Horse Back Trips Via Chalets.

Glacier Park has over 300 miles of mountain trails in addition to the auto roads. These trails take one over the summits of the Continental Divide, up beautiful valleys and to remote scenic regions. Special horse back tours are a popular form of recreation. One can start at Glacier Park Hotel and go over the mountains to Many-Glacier Hotel, Going-to-the-Sun Chalets or other points, stopping at a hotel or Chalet each night. A trip of this kind can be made in 7 to 16 days. Complete itineraries made on request to any Great Northern Railway Agent or Glacier Park Hotel Company, Glacier Park, Mont.

CHALET TOURS BY SADDLE HORSE.

Glacier Park has been called the "Saddle Horse Park" and in this way it is different than most of our National play grounds. Any saddle horse trip named in this folder can also be made in the more primitive, or more strenuous, way of walking—and people are doing more walking each year. There is an exhilaration and sport in the use of horses however that adds to the joy of the exercise. Two trips are suggested but an itinerary can be made to conform to the time one has to spend. These trips bring one to a comfortable camp or hotel every night.

1. Start from Glacier Park Hotel and go via inside trail to Two Medicine, Cutbank, St. Mary, Going-to-the-Sun and Many-Glacier Hotel, returning via Swift Current Pass and Granite Park to Lake McDonald, Sperry Chalets, via Gunsight Pass to Sun Camp where horses are dropped and auto to entrance is used. This takes from 12 to 14 days.
2. Take auto direct to Many-Glacier Hotel. From here use saddle horses for side trips to Iceberg Lake, etc. Thence via Swift Current Pass to Granite Park; via Logan Pass to Sun Camp; thence via St. Mary, Triple Divide and Red Eagle to Cutbank Chalets; thence via Mt. Morgan Pass to Two Medicine and Mt. Henry trail to Glacier Park Hotel. This takes about 8 to 10 days.
The cost is on a per day basis, \$3.50 for saddle horse, \$10.00 for a general guide, the guide will take care of six to ten people. Board, \$4.50 to \$5.00 per day at chalets.

Special itineraries showing route and complete cost furnished on request to any Great Northern Agent or to Glacier Park Hotel Co. State number in party and the time available.

PERSONALLY CONDUCTED AND INDEPENDENT CAMPING TRIPS.

Glacier National Park contains many beautiful camping spots and camping tours independent of hotels or chalets, are popular for tourists who like to "rough it". The Park Saddle Horse Co., licensed outfitters in Glacier Park are prepared to furnish complete outfits at the following prices for trip of ten or more days. Special arrangement may be made for camping trips of less than ten days.

	Cost per day per person.
1 person	\$27.00
2 persons	17.00
3 "	14.00
4 "	13.00
5 "	12.00
6 "	11.00
7 " or more	10.00

A general guide and one cook, including their horses, are furnished parties of one to four persons. For parties of more than four persons a limited guide or helper, including horse, is added to each additional four persons or any part of that number. A saddle horse and pack horse is provided each member of a party, each pack horse carrying about one hundred and fifty pounds.

The following articles of bedding are furnished free to each person:

- 1 Pillow and pillow case.
- 3 Single wool blankets.
- 1 Comfort.
- Mattress and cotton flannel sheets.

Additional blankets may be rented for \$1.00 per pair for the trip. Tents and necessary cooking utensils are also furnished free; in fact everything except provisions.

If considerable personal luggage or large quantities of supplies are desired to be carried or additional help is required, extra pack horses will be furnished at the rate of \$3.00 per day for each horse, or \$8.00 per day for limited guide or cook and horse.

The provisions for the entire period are purchased by the tourist. Provisions may be purchased locally where complete assortments are carried. The provisions usually cost from \$1.50 to \$2.50 per day per person, varying according to the number taking the trip and the requirements of the different parties.

The outfitters endeavor to, and usually are able to, furnish cooks and all necessary help for all camping trips on short notice but at least ten days' notice should be given and this is allowed, if necessary, to permit them time for securing proper cooks and assistants.

Personally conducted 10-day camping trip will be made early in August—cost \$200.00. Ask for details.

FISH AND FISHING.

In effort to create and maintain the finest kind of trout fishing, the National Park Service, in conjunction with the U. S. Bureau of Fisheries, have built and operate a fish hatchery at Glacier Park. In addition to the black spotted trout or the cut-throat trout which are native to these waters, several other varieties have been introduced, viz.: Eastern brook, rainbow, steel-head and grayling.

Two Medicine Lake, for Black Spotted or Eastern Brook.
McDermott and Josephine Lakes, Rainbow and Eastern Brook.

Grinnell Lake, Cut-throat, Rainbow.
Cracker Lake, Black Spotted, Eastern Brook.
Gunsight Lake, Cut-throat, Rainbow.
Red Eagle Lake, Cut-throat.

Cut Bank River, Cut-throat, Eastern Brook.
St. Mary Lake, Mackinaw or "Lake Trout."
North Fork of Kennedy Creek, Black Spotted.
Belly River, Glens Lake, Cut-throat.
Lake McDonald, Bull trout, Black Spotted, Cut-throat.
Flathead River, Rainbow, Cut-throat, Bull trout.

The fly casting rod and artificial fly is the method generally used. No license is necessary within the Park. The limit is 10 fish per day, no fish under seven inches to be taken.

STANDARD ONE TO SEVEN DAY ALL EXPENSE TOURS.

The following standard all expense tours are available during the season as noted and are included in Summer Tourist Tariff. Railway ticket agents may sell tickets for these tours in connection with rail tickets at rates and under conditions shown in tariffs.

ONE DAY TRIP: Rate \$15.50.

Glacier Park Hotel to Going-to-the-Sun Chalets and Return by Automobile and Launch.

DAILY DURING SEASON.

Includes one day hotel accommodations at minimum rate without bath, auto and launch fare. Cost of Trip begins with lodging day of arrival at Glacier Park Hotel and ends with dinner on day of return at Glacier Park Hotel. Rooms with bath may be obtained if available, after arrival at Glacier Park upon payment of difference in rates.

The above trip takes the tourist to Going-to-the-Sun Chalets at the head of St. Mary Lake, considered one of the finest scenic spots in the park. The ride over the 32 mile auto road and the 10 mile trip by launch on St. Mary Lake enables one to see a ninety mile panorama of Glacier Park scenery in 10 hours.

Day of Arrival lodging Glacier Park Hotel.

Next Day:

Breakfast at Glacier Park Hotel.	
Lv. Glacier Park Hotel (auto).....	8:00 a. m.
Ar. St. Mary Chalets.....	10:20 a. m.
Lv. St. Mary Chalets (launch).....	11:00 a. m.
Ar. Going-to-the-Sun Chalets.....	12:00 noon
Luncheon at Going-to-the-Sun Chalets.	
Lv. Going-to-the-Sun Chalets (launch).....	2:00 p. m.
Ar. St. Mary Chalets.....	3:00 p. m.
Lv. St. Mary Chalets (auto).....	3:40 p. m.
Ar. Glacier Park Hotel—Dinner.....	6:00 p. m.

TWO DAY TRIP: Rate \$28.50.

Many-Glacier Hotel and Return by Automobile and Launch.

Glacier Park Hotel to Many-Glacier Hotel, St. Mary and Going-to-the-Sun Chalets.

DAILY DURING SEASON.

Includes two days' hotel accommodations at minimum rate without bath, auto and launch fare. Cost of Trip begins with lodging day of arrival at Glacier Park Hotel and ends with dinner on day of return at Glacier Park Hotel. Rooms with bath may be obtained if available, after arrival at Glacier Park upon payment of difference in rates.

This two-day tour is the minimum time required to make trip from Glacier Park Hotel to Many-Glacier Hotel and return; stay at Many-Glacier can be extended as long as desired by paying regular hotel rate. Some people prefer to rest a few days at this place. Arrangements for horseback trips, walks, fishing, etc., can be arranged at transportation desk in hotel after arrival. See page 7 for local horseback trips and rates.

Day of Arrival lodging Glacier Park Hotel.

First Day:

Breakfast at Glacier Park Hotel.	
Lv. Glacier Park Hotel.....	8:00 a. m.
Ar. St. Mary Chalets.....	10:20 a. m.
Lv. St. Mary Chalets.....	10:40 a. m.
Ar. Many-Glacier Hotel.....	12:15 p. m.
Lunch, dinner and lodging at Many-Glacier Hotel. Saddle horse trip to Iceberg Lake in the afternoon \$4.00 additional.	

Second Day:

Breakfast at Many-Glacier Hotel.	
Lv. Many-Glacier Hotel (auto).....	8:15 a. m.
Ar. St. Mary Chalets.....	9:50 a. m.
Lv. St. Mary Chalets (launch).....	11:00 a. m.
Ar. Going-to-the-Sun Chalets.....	12:00 noon
Lunch at Going-to-the-Sun Chalets.	
Lv. Going-to-the-Sun Chalets (launch).....	2:00 p. m.
Ar. St. Mary Chalets.....	3:00 p. m.
Lv. St. Mary Chalets (auto).....	3:40 p. m.
Ar. Glacier Park Hotel—Dinner.....	6:00 p. m.

THREE DAY TRIP: Rate \$34.50.

Automobile and Launch.

Glacier Park Hotel to St. Mary Chalets, Many-Glacier Hotel, Iceberg Lake and Going-to-the-Sun Chalets.

DAILY DURING SEASON.

Includes three days' hotel accommodations at minimum rate without bath, auto and launch fare. Cost of Trip begins with lodging day of arrival at Glacier Park Hotel and ends with dinner on day of return at Glacier Park Hotel. Rooms with bath may be obtained if available, after arrival at Glacier Park upon payment of difference in rates.

Three-Day Trip:
The same as the two-day trip but allows one full day at Many-Glacier for side trips. First day from Glacier Park Hotel to Many-Glacier Hotel by auto; second day at Many-Glacier with full day for side trips by horse or walking; third day to Going-to-the-Sun Chalets by auto and launch, thence via St. Mary and auto to Glacier Park Hotel.

Day of Arrival lodging Glacier Park Hotel.

First Day:

Breakfast at Glacier Park Hotel.	
Lv. Glacier Park Hotel (auto).....	8:00 a. m.
Ar. St. Mary Chalets.....	10:20 a. m.
Lv. St. Mary Chalets (auto).....	10:40 a. m.
Ar. Many-Glacier Hotel.....	12:15 p. m.
Luncheon, dinner and lodging at Many-Glacier.	

Second Day:

Breakfast at Many-Glacier Hotel.	
Horseback trip or walking trip, Many-Glacier Hotel to Iceberg Lake or Cracker Lake and return.	
Luncheon carried. For saddle horse rates (Horse \$4.00 extra), see page 7.	
Dinner and lodging at Many-Glacier Hotel.	

Third Day:

Breakfast at Many-Glacier Hotel.	
Lv. Many-Glacier Hotel (auto).....	8:15 a. m.
Ar. St. Mary Chalets.....	9:50 a. m.
Lv. St. Mary Chalets (launch).....	11:00 a. m.
Ar. Going-to-the-Sun Chalets.....	12:00 noon
Luncheon at Going-to-the-Sun Chalets.	
Lv. Going-to-the-Sun Chalets (launch).....	2:00 p. m.
Ar. St. Mary Chalets.....	3:00 p. m.
Lv. St. Mary Chalets (auto).....	3:40 p. m.
Ar. Glacier Park Hotel—Dinner.....	6:00 p. m.

FOUR DAY TRIP: Rate \$43.00.

Automobile and Launch.

Glacier Park Hotel to Two Medicine Chalets, St. Mary Chalets, Many-Glacier Hotel and return via Going-to-the-Sun Chalets and Glacier Park Hotel.

DAILY DURING SEASON.

Includes four days' hotel accommodations at minimum rate without bath, auto and launch fare.

Cost of Trip begins with lodging day of arrival at Glacier Park Hotel and ends with dinner on day of return at Glacier Park Hotel.

Rooms with bath may be obtained if available, after arrival at Glacier Park upon payment of difference in rates.

This four day tour is designed for those who do not care to use saddle horses.

It enables one to see the best scenic centers by use of automobile and launch. The first day takes one to the beautiful Two Medicine Lake, returning to Glacier Park Hotel for dinner. The second day the ride is by auto stage to Many-Glacier Hotel arriving for lunch.

The entire afternoon may be spent in short walks to points of interest. The third day one leaves Many-Glacier after lunch by auto and launch for Sun Camp arriving there for dinner. The morning of the fourth day gives opportunity to walk the half mile to Baring Falls and Jeannette Gorge, a beautiful sight. After lunch the journey by launch down St. Mary Lake and auto to Glacier Park Hotel is resumed, arriving in time for dinner.

Day of Arrival lodging Glacier Park Hotel.

First Day:

Breakfast and Lunch at Glacier Park Hotel.
Lv. Glacier Park Hotel via Auto..... 1:15 p. m.
Ar. Two Medicine Lake..... 2:30 p. m.
Lv. Two Medicine Lake..... 5:00 p. m.
Ar. Glacier Park Hotel..... 6:00 p. m.
Dinner and Lodging at Glacier Park Hotel.

Second Day:

Breakfast at Glacier Park Hotel.
Lv. Glacier Park Hotel via auto..... 8:00 a. m.
Ar. Many-Glacier Hotel..... 12:15 p. m.
Saddle horse trips, trail walks, fishing and boating available in afternoon. See page 7 for saddle horse rates.
Lunch, Dinner and Lodging at Many-Glacier Hotel.

Third Day:

Breakfast and Lunch at Many-Glacier Hotel.
Morning available for walk to Josephine Lake.
Lv. Many-Glacier Hotel via Auto..... 1:45 p. m.
Ar. St. Mary Chalets..... 3:00 p. m.
Lv. St. Mary Chalets via Launch..... 5:00 p. m.
Ar. Going-to-the-Sun Chalets..... 6:00 p. m.
Dinner and Lodging at Going-to-the-Sun Chalets.

Fourth Day:

Breakfast and Lunch at Going-to-the-Sun Chalets.
Lv. Going-to-the-Sun Chalets via Launch..... 2:00 p. m.
Ar. St. Mary Chalets..... 3:00 p. m.
Lv. St. Mary Chalets via Auto..... 3:40 p. m.
Ar. Glacier Park Hotel..... 6:00 p. m.
Dinner at Glacier Park Hotel.

FIVE DAY TRIP: Rate \$51.50.

Automobile, Launch and Saddle Horse.

DAILY JULY 1st TO SEPT. 1st.

Glacier Park Hotel to Many-Glacier Hotel, Iceberg Lake, Cracker Lake, Granite Park Chalets, Going-to-the-Sun Chalets, St. Mary Chalets and Return to Glacier Park Hotel.

Includes five days' hotel accommodations at minimum rate without bath, auto and launch fare and saddle horse the fourth day.

Cost of Trip begins with lodging day of arrival at Glacier Park Hotel and ends with dinner on day of return at Glacier Park Hotel.

Rooms with bath may be obtained if available, after arrival at Glacier Park upon payment of difference in rates.

This five day trip is the same as the three day trip except that it permits three full days at Many-Glacier Hotel and provides opportunity to take side trips either by walking or saddle horse to the several points of interest including Iceberg Lake, Cracker Lake and Granite Park.

Or the time may be devoted to rest, fishing or short walks.

This is the most satisfactory of the various trips for one who does not care for too much strenuous exercise and yet wants full opportunity to enjoy the scenery.

The best way to get a full appreciation of this scenic marvel of America is to get out on the trails either afoot or horseback. The ponies are easy riding and sure footed.

Day of Arrival lodging Glacier Park Hotel.

First Day:

Breakfast at Glacier Park Hotel.
Lv. Glacier Park Hotel (auto)..... 8:00 a. m.
Ar. St. Mary Chalets..... 10:20 a. m.
Lv. St. Mary Chalets (auto)..... 10:40 a. m.
Ar. Many-Glacier Hotel..... 12:15 p. m.
Luncheon, Dinner and Lodging at Many-Glacier Hotel.

Second Day:

Breakfast at Many-Glacier Hotel.
Saddle horse (extra charge) or walking trip to Iceberg Lake, lunch carried. See page 7 for saddle horse rates.
Dinner and Lodging at Many-Glacier Hotel.

Third Day:

Breakfast at Many-Glacier Hotel.
Saddle horse trip (extra charge) or walking trip to Cracker Lake or Grinnell Lake. See page 7 for rates.
Dinner and Lodging at Many-Glacier Hotel.

Fourth Day:

Breakfast at Many-Glacier Hotel.
Horse back trip to Granite Park Chalets and return (saddle horse included in cost of tour.)
Lunch, Granite Park Chalets, Dinner and Lodging at Many-Glacier Hotel.

Fifth Day:

Breakfast at Many-Glacier Hotel.
Lv. Many-Glacier Hotel (auto)..... 8:15 a. m.
Ar. St. Mary Chalets..... 9:50 a. m.
Lv. St. Mary Chalets (launch)..... 11:00 a. m.
Ar. Going-to-the-Sun Chalets..... 12:00 noon
Luncheon at Going-to-the-Sun Chalets.
Lv. Going-to-the-Sun Chalets (launch)..... 2:00 p. m.
Ar. St. Mary Chalets..... 3:00 p. m.
Lv. St. Mary Chalets (auto)..... 3:40 p. m.
Ar. Glacier Park Hotel—Dinner..... 6:00 p. m.

Use "Travelers' Checks". They will save you time and inconvenience.

SIX DAY TRIP. Rate \$57.25.

Automobile, Launch and Saddle Horse.

DAILY JULY 1st TO SEPT. 1st.

Glacier Park Hotel to St. Mary Chalet, Many-Glacier Hotel, Iceberg Lake, Cracker Lake, Granite Park Chalets, returning via Piegan Pass and Going-to-the-Sun Chalets to Glacier Park Hotel.

Includes six days' hotel accommodations at minimum rate without bath, auto and launch fare and saddle horse the fourth and fifth days.

Cost of Trip begins with lodging day of arrival at Glacier Park Hotel and ends with dinner on day of return at Glacier Park Hotel.

Rooms with bath may be obtained if available, after arrival at Glacier Park upon payment of difference in rates.

This six day trip includes everything that the five day trip offers but enables one to go from Many-Glacier Hotel to Sun Camp by saddle horse over Piegan Pass instead of returning by the auto. Many people find it is much easier to ride horses than they imagined and are glad of the opportunity to put in an extra day in the saddle to cover the wonderfully scenic Piegan Pass trail. The return to Glacier Park Hotel can be continued if desired in three additional days by using saddle horse over the inside trail from St. Mary or Sun Camp. There is an almost unexplored country on this route and it takes one via the Red Eagle Valley, Triple Divide Mountain and the Scenic Cut Bank Pass to Two Medicine Chalets and Glacier Park Hotel.

Day of Arrival lodging Glacier Park Hotel.

First Day:

Breakfast at Glacier Park Hotel.
Lv. Glacier Park Hotel (auto) 8:00 a. m.
Ar. St. Mary Chalets 10:20 a. m.
Lv. St. Mary Chalets (auto) 10:40 a. m.
Ar. Many-Glacier Hotel 12:15 p. m.
Luncheon, Dinner and Lodging at Many-Glacier Hotel.

Second Day:

Breakfast at Many-Glacier Hotel.
Many-Glacier Hotel to Iceberg Lake and return, saddle horse (extra charge) or walking trip, lunch carried. See page 7 for horse rates.
Dinner and Lodging at Many-Glacier Hotel.

Third Day:

Breakfast at Many-Glacier Hotel.
Many-Glacier Hotel to Cracker Lake or Grinnell Lake, saddle horse (extra charge) or walking trip, lunch carried. See page 7 for horse rates.
Dinner and Lodging at Many-Glacier Hotel.

Fourth Day:

Breakfast at Many-Glacier Hotel.
Saddle horse trip to Granite Park and return, horse included in "cost of tour," lunch at Granite Park Chalets.
Dinner and Lodging at Many-Glacier Hotel.

Fifth Day:

Breakfast at Many-Glacier Hotel.
Lv. Many-Glacier Hotel by saddle horse 8:00 a. m.
Following trail over Piegan Pass to Going-to-the-Sun Chalets. Horse included in cost of tour.
Luncheon carried.
Dinner and Lodging at Going-to-the-Sun Chalets.

Sixth Day:

Breakfast and Lunch at Going-to-the-Sun Chalets.
Lv. Going-to-the-Sun Chalets (launch) 2:00 p. m.
Ar. St. Mary Chalets 3:00 p. m.
Lv. St. Mary Chalets (auto) 3:40 p. m.
Ar. Glacier Park Hotel—Dinner 6:00 p. m.

Use "Travelers' Checks". They will save you time and inconvenience.

SEVEN DAY TRIP. Rate \$68.50.

Automobile, Saddle Horse and Launch.

DAILY JULY 1st TO SEPT. 1st.

Glacier Park Hotel to Many-Glacier Hotel, Iceberg Lake, Cracker Lake, Granite Park Chalets, over Logan Pass to "Sun Chalets" and over Piegan Pass to Many-Glacier Hotel, returning via St. Mary to Going-to-the-Sun Chalets to Glacier Park Hotel.

Includes seven days' hotel accommodations at minimum rate without bath, auto and launch fare and saddle horse the fourth, fifth and sixth days.

Cost of Trip begins with lodging day of arrival at Glacier Park Hotel and ends with dinner on day of return at Glacier Park Hotel.

Rooms with bath may be obtained if available, after arrival at Glacier Park upon payment of difference in rates.

This seven day trip takes in the best scenic "high spots" in the Park. It offers time for all side trips one may wish to make from Many-Glacier Hotel and takes the tourist over the famous Garden Wall trail and over three most scenic passes in three consecutive days. The route is from Many-Glacier Hotel over Swift Current Pass to Granite Park Chalet. Next day over the Garden Wall trail and Logan Pass down to Going-to-the-Sun Camp. The third day over Piegan Pass and back to Many-Glacier Hotel. World travelers are unanimous in declaring this the greatest scenic marvel of America and many say of the world.

Return from Many-Glacier to Glacier Park Hotel can be direct or via Sun Camp side trip.

Day of Arrival lodging Glacier Park Hotel.

First Day:

Breakfast at Glacier Park Hotel.
 Lv. Glacier Park Hotel. (auto)..... 8:00 a. m.
 Ar. St. Mary Chalets..... 10:20 a. m.
 Lv. St. Mary Chalets (auto)..... 10:40 a. m.
 Ar. Many-Glacier Hotel..... 12:15 p. m.
 Luncheon, Dinner and Lodging at Many-Glacier Hotel.

Second Day:

Breakfast at Many-Glacier Hotel.
 Many-Glacier Hotel to Iceberg Lake and return, walking or saddle horse (extra charge) trip. See page 7 for horse rates. Lunch carried.
 Dinner and Lodging at Many-Glacier Hotel.

Third Day:

Breakfast at Many-Glacier Hotel.
 Many-Glacier Hotel to Cracker Lake and return, walking or saddle horse (extra charge) trip. See page 7 for horse rates. Lunch carried.
 Dinner and Lodging at Many-Glacier Hotel.

Fourth Day:

Breakfast at Many-Glacier Hotel.
 Saddle horse to Granite Park Chalets. Horse included in cost of tour.
 Lunch, Dinner and Lodging at Granite Park.

Fifth Day:

Breakfast at Granite Park Chalet.
 Saddle horse Granite Park via Logan Pass to Going-to-the-Sun, lunch carried. Horse included in cost of tour.
 Dinner and Lodging at Going-to-the-Sun Chalet.

Sixth Day:

Breakfast at Going-to-the-Sun Chalet.
 Lv. Going-to-the-Sun (horseback).
 Saddle horse following trail over Piegan Pass to Many-Glacier. Lunch carried. Horse included in cost of tour.
 Ar. Many-Glacier Hotel.
 Dinner and Lodging at Many-Glacier Hotel.

Seventh Day:

Breakfast at Many-Glacier Hotel.
 Lv. Many-Glacier Hotel..... 8:15 a. m.
 Ar. St. Mary Chalet..... 9:50 a. m.
 Lv. St. Mary via launch..... 11:00 a. m.
 Ar. Going-to-the-Sun Chalets..... 12:00 noon
 Luncheon at Going-to-the-Sun Chalets.
 Lv. Going-to-the-Sun Chalets (launch)..... 2:00 p. m.
 Ar. St. Mary Chalets..... 3:00 p. m.
 Lv. St. Mary Chalets (auto)..... 3:40 p. m.
 Ar. Glacier Park Hotel—Dinner..... 6:00 p. m.

NOTE: Tourists holding Railway tickets for park trips must show their tickets to Room Clerk at Glacier Park Hotel at time of registering in order that they may be provided with the proper hotel accommodations. After registering, tickets must be presented to the transportation department to be exchanged for regular park tour coupons.

Tourists arriving on morning trains who do not have lodging or breakfast will be refunded the unused value of their coupons.

The value of any unused coupons for auto or saddle horse service not performed will be refunded upon presentation of coupons.




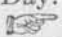
INFORMATION REGARDING COST OF TOURS WHEN ROOMS WITH BATH ARE USED.

Total cost of one to seven day trips shown on pages 9, 10, 11 and 12 when rooms with bath are used.

Railway Ticket Agents should refer to Summer Tourist Tariff for authorized all-expense tickets which may be sold only at minimum rate without bath. Tickets are **not** to be sold for rooms with bath.

Glacier Park and Many-Glacier Hotels have rooms with bath at various rates dependent on location of room. Rooms with bath may be obtained by making reservation in advance or after arrival at Glacier Park if available.

THIS TABLE FOR INFORMATION ONLY.

Class of Hotel Accommodations 	One Day Trip	Two Day Trip	Three Day Trip	Four Day Trip	Five Day Trip	Six Day Trip	Seven Day Trip
	A	A	A	A	B	B	B
With Bath at \$8.00 Per Day..... 	\$17.50	\$32.50	\$40.50	\$49.00	\$61.50	\$67.25	\$78.50
With Bath at \$9.00 Per Day..... 	\$18.50	\$34.50	\$43.50	\$52.00	\$66.50	\$72.25	\$83.50
With Bath at \$10.00 Per Day..... 	\$19.50	\$36.50	\$46.50	\$55.00	\$71.50	\$77.25	\$88.50

Note—

Requests for reservations must state class of rooms desired and number in party.

Above costs are on the basis of two people occupying a double room. For exclusive occupancy by one person the rate is \$1.00 per day higher.

There are a limited number of rooms at Glacier Park and Many-Glacier Hotels at \$7.00 per day.

Saddle horses for side trips to Iceberg Lake or Cracker Lake not included in cost.

Five Day Trip includes saddle horse to Granite Park and return.

Six Day Trip includes saddle horse to Granite Park and return and from Many-Glacier to Going-to-the-Sun Camp.

Seven Day Trip includes saddle horse for triangle trip, Many-Glacier to Granite to Sun Camp and back to Many-Glacier.

No rooms with bath at Going-to-the-Sun Chalets or Granite Park Chalet.

A—Available June 15 to Sept. 15.

B—Available July 1 to Sept. 1.

“TRAVELERS’ CHECKS HONORED.”

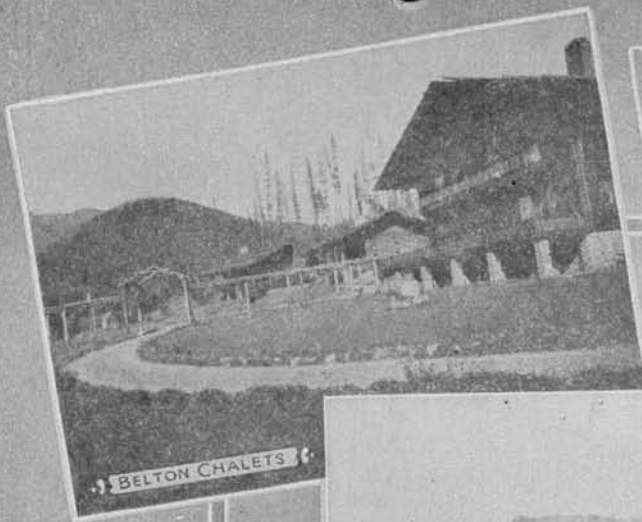
Tourists should provide themselves with “Travelers’ Checks”; it will save them time and inconvenience as personal checks are not accepted at the hotels.

For further information regarding Glacier National Park, rates, tours, stopovers, etc., call on or write any Great Northern Railway representative named below.

GENERAL AND TRAVELING AGENTS.

BELLINGHAM, WASH., 212 Kulshan Bldg.	C. D. Thompson, District Traffic Agent. R. M. Smith, City Passenger Agent.
BILLINGS, MONT., 311 Electric Bldg.	J. F. Kelly, General Agent.
BOSTON, MASS., 294 Washington St.	John H. Kenney, New England Passenger Agent.
BUFFALO, N. Y., 683 Ellicott Square Bldg.	Geo. Eighthy, Jr., District Passenger Agent.
BUTTE, MONT., 513 Metals Bank Bldg.	E. O. Boyle, General Agent.
102 North Main St.	D. E. Wilder, Agent.
CHICAGO, ILL., 113 So. Clark St.	E. H. Moot, General Agent, Passenger Department. F. A. Marnell, Traveling Passenger Agent. S. A. Farrell, Traveling Passenger Agent.
CINCINNATI, OHIO, 609 Traction Bldg.	J. H. Brinkman, General Agent. John E. Westerfield, Traveling Passenger Agent.
CLEVELAND, OHIO, 508 Hippodrome Bldg.	F. L. Cobb, City Passenger Agent.
DALLAS, TEX., 1013 Southwestern Life Bldg.	I. H. Turner, Southwestern Agent.
DETROIT, MICH., 619 Free Press Bldg.	E. B. Clark, General Agent. W. J. Rintoul, Traveling Passenger Agent.
DES MOINES, IOWA, 425 Kraft Bldg.	W. M. Romine, District Passenger Agent. H. R. Carl, General Agent.
DULUTH, MINN., 428 W. Superior St.	W. A. Wilson, District Passenger Agent. C. M. Cornelius, City Passenger Agent.
FARGO, N. D., 116 Broadway	J. L. Rohan, General Agent.
GRAND FORKS, N. D.	M. Neville, Ticket Agent.
GREAT FALLS, MONT., 802 First National Bank Bldg.	J. S. Bock, General Agent. J. F. Beckett, Traveling Passenger Agent.
Great Northern Station	Chas. Doherty, District Passenger Agent.
HELENA, MONT., 510 Power Bldg.	L. B. Woods, Assistant General Freight and Passenger Agent.
Placer Hotel Bldg.	W. J. Garrity, City Passenger and Ticket Agent.
KANSAS CITY, MO., 516 Railway Exchange Bldg.	V. E. Jones, General Agent Passenger Department.
LEWISTOWN, MONT.	D. C. Bates, Traveling Freight and Passenger Agent.
LOS ANGELES, CAL., 716 Citizens Nat'l Bank Bldg.	J. W. Falon, District Freight and Passenger Agent. H. Donald Day, City Passenger Agent.
MINOT, N. D.	R. F. Mills, General Agent.
MINNEAPOLIS, MINN., 524 2nd Ave. So.	R. C. Michkils, City Passenger Agent. J. F. McElroy, Ticket Agent.
MILWAUKEE, WIS., 810 Majestic Bldg.	E. A. Fradenburgh, General Agent. B. C. Culbertson, Traveling Agent.
NEW YORK, N. Y., 516 Longacre Bldg., Broadway at 42d St.	M. M. Hubbert, General Eastern Passenger Agent. F. M. Schnell, District Passenger Agent. Henry Diessler, City Passenger Agent.
NELSON, B. C., 421 Baker Street	E. L. Buchanan, City Freight and Passenger Agent.
PHILADELPHIA, PA., 409 Finance Bldg.	Edmund H. Whitlock, Traveling Passenger Agent.
PITTSBURGH, PA., 214 Empire Bldg.	P. H. Yorke, District Passenger Agent. W. E. Hunt, General Agent.
PORTLAND, ORE., 201 Morgan Bldg.	H. Dickson, City Passenger Agent. J. H. Running, Traveling Passenger Agent.
ST. PAUL, MINN., 4th and Jackson Sts.	Arthur L. Johnston, City Passenger Agent.
712 Great Northern Bldg.	W. J. Dutch, Ticket Agent. A. E. Hathaway, Traveling Passenger Agent. W. C. Thorn, District Passenger Agent.
ST. LOUIS, MO., 203 Boatmen's Bank	J. M. Sanford, General Agent.
SAN FRANCISCO, CAL., 1009 Hearst Bldg.	C. O. Layton, Traveling Passenger Agent. A. J. Aicher, General Agent.
SEATTLE, WASH., 201 King St. Station	J. C. Javet, City Passenger Agent.
1403 4th Ave.	A. J. Arrivee, Traveling Passenger Agent. C. W. Mahoney, District Passenger Agent. J. W. Young, General Agent, Passenger Dept. T. J. Moore, City Passenger and Ticket Agent. P. J. Donohue, General Agent.
SIOUX CITY, IOWA, 516 Nebraska St.	G. R. Norton, City Passenger Agent.
SIOUX FALLS, S. D.	Thos. Simpson, General Agent. J. F. Pewters, General Agent.
SPOKANE, WASH., Davenport Hotel	R. C. Murphy, City Passenger and Ticket Agent. James Johnstone, City Passenger Agent. A. Alstrom, Traveling Passenger Agent.
SUPERIOR WIS., Tower Ave. and 13th St.	D. A. Blakeney, Joint Ticket Agent.
TACOMA, WASH., 108 So. Tenth St.	D. G. Black, General Agent.
TORONTO, ONT., 202 Webster Bldg.	F. P. Herbert, City Passenger and Ticket Agent. H. E. Watkins, General Eastern Canadian Agent.
VANCOUVER, B. C., 607 Hastings St.	E. A. Dye, General Agent.
VANCOUVER, WASH.	A. Whitnall, City Passenger and Ticket Agent.
VICTORIA, B. C., 916 Government St.	C. N. Christopherson, Traveling Freight and Passenger Agent.
WENATCHEE, WASH.	A. H. Hebb, General Agent. J. C. Maher, General Agent.
WINNIPEG, MAN., 226 Portage Ave.	M. F. Reading, Ticket Agent. W. T. Hetherington, District Freight and Passenger Agent. T. A. Thompson, City Passenger Agent.

A. J. DICKINSON, Passenger Traffic Manager, St. Paul, Minn.	E. H. WILDE, General Passenger Agent, St. Paul, Minn.	F. T. HOLMES, Assistant General Passenger Agent, St. Paul, Minn.	C. W. MELDRUM, Assistant General Passenger Agent, Seattle, Wash.
--	--	---	---



BELTON CHALET



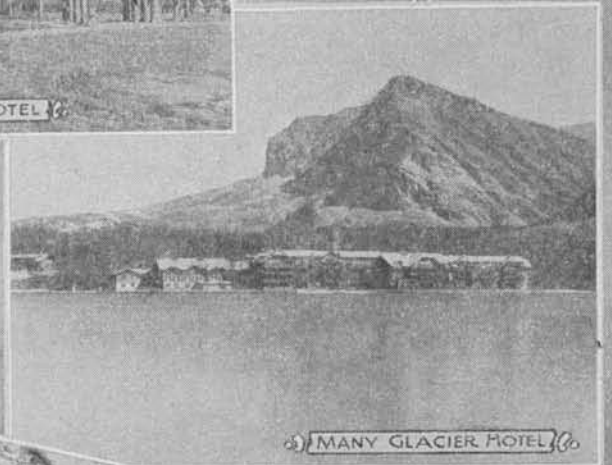
ST. MARY CHALET



GLACIER PARK HOTEL



GOING-TO-THE SUN CHALET



MANY GLACIER HOTEL



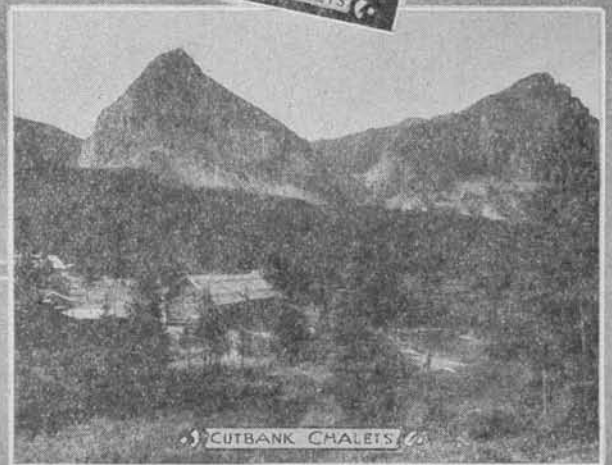
SPERRY CHALET



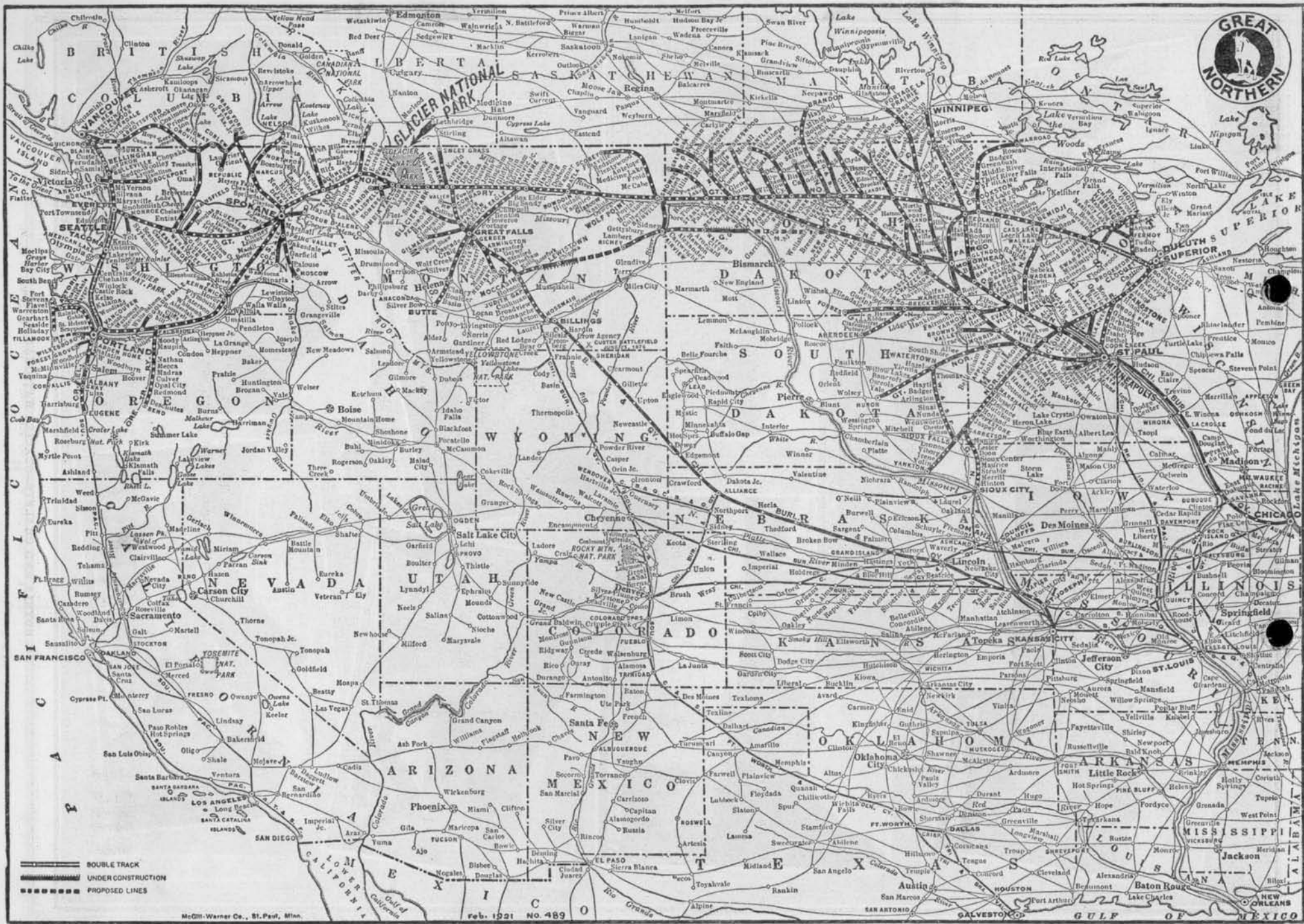
GRANITE PARK CHALET



TWO MEDICINE CHALET



CUTBANK CHALET



McGill-Warner Co., St. Paul, Minn.

Feb. 1921 NO. 489

GULF OF MEXICO



Minnesota Historical Society

Copyright in this digital version belongs to the Minnesota Historical Society and its content may not be copied without the copyright holder's express written permission. Users may print, download, link to, or email content, however, for individual use.

To request permission for commercial or educational use, please contact the Minnesota Historical Society.



www.mnhs.org