



## TIP SHEET

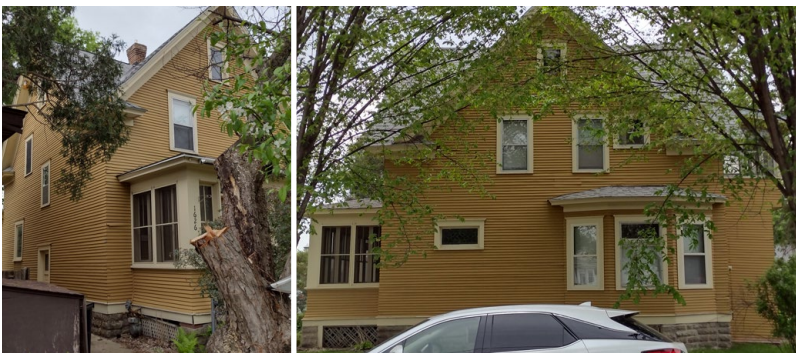
# Photographing your building

Having a good set of photographs improves understanding of your building and your project. This tip sheet will help you take pictures that will document your building. There are four guidelines that you should follow when photographing.

- 1. Try to avoid photographing directly into the sun.** If you must, use trees, a notebook, or anything to shade the camera lens. Cloudy days are usually the best.



- 3. Stand back to minimize “fish-eye” distortion.** You can see more of the building using zoom. Sometimes close photographs are needed because of obstructions, such as street trees.



- 2. Fill the frame with the building.** Prioritize the landscape with the extra space.



- 4. Try and get all sides of the building.** Sometimes oblique angles are better than flat elevations.

