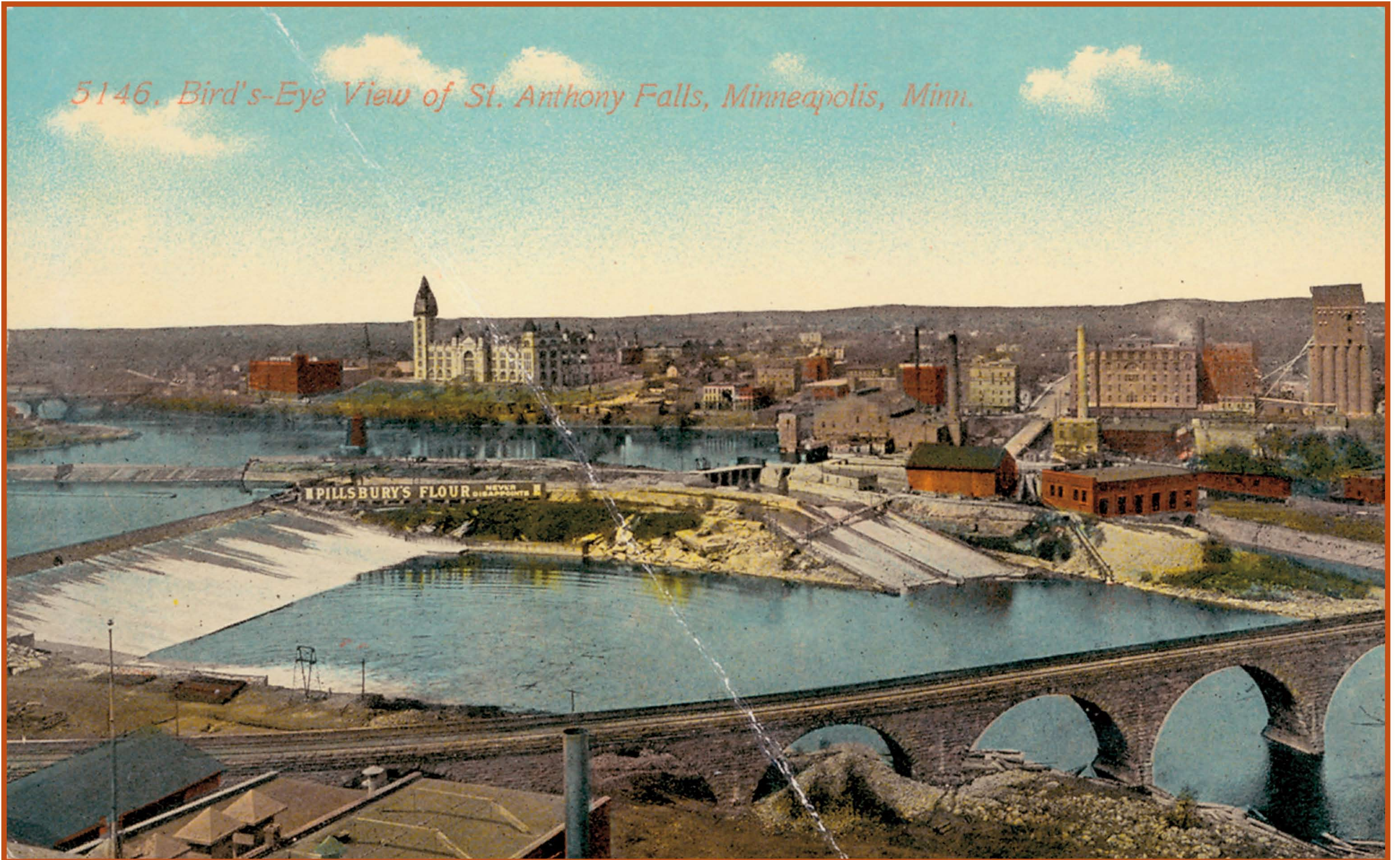


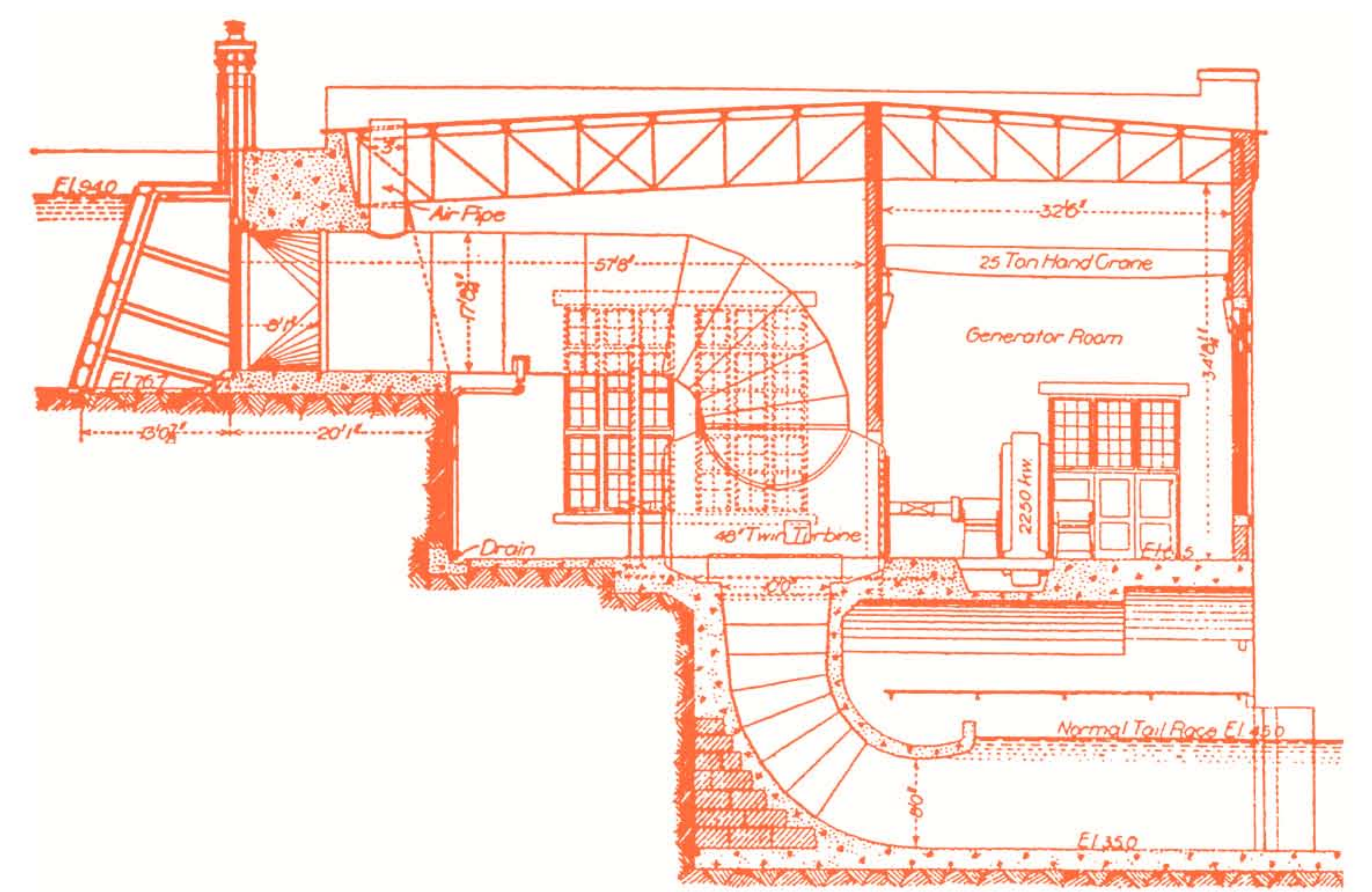
Electrical Power from the Mississippi River



St. Anthony Falls, Minneapolis, about 1908
The Hennepin Island Hydro Plant is the flat-roofed, red brick building on the far right.

St. Anthony Falls, Minneapolis

Engineers built Minnesota's first central hydroelectric power station at Saint Anthony Falls in 1882. The energy of the falling water harnessed by the plant helped light the business district. The Lower Dam Hydro Plant (1897) and Hennepin Island Hydro Plant (1908) were used to power the Twin City Rapid Transit Company streetcar system until the 1950s.



Drawing, Hennepin Island Hydro Plant, about 1890