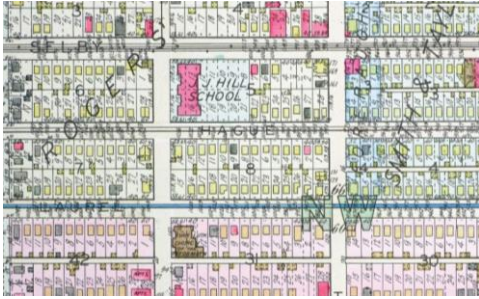
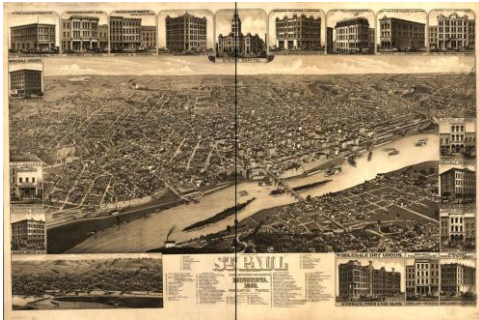


PRIMARY SOURCE SET

The following primary sources were used by third grade teacher Geoff Freeman in a social studies unit about the history of JJ Hill School. Geoff's class is highlighted in [Culturally Relevant Pedagogy Using Primary Sources: Tenet 2 in an Elementary Classroom](#).



Hopkins, G.M. *Plat Book of the City of Saint Paul, Minn. And Suburbs. (Plate 18.)* Saint Paul, MN: St. Paul Real Estate Board, 1916. Atlas. Retrieved from the Minnesota Historical Society, collections.mnhs.org/cms/display.php?irn=11007091. (Accessed March 07, 2018.)



Wellge, H, J. J Stoner, H Brosius, and Beck & Pauli. *St. Paul, Minnesota: state capital and county seat of Ramsey Co.* Madison, Wis.: J.J. Stoner, 1883. Map. Retrieved from the Library of Congress, loc.gov/item/84690615. (Accessed March 07, 2018.)



Brown, Treacy & Co. *Bird's-eye view of St. Paul, looking west from Dayton's Bluff.* 1893. Map. Retrieved from the Library of Congress, loc.gov/item/75694647. (Accessed March 07, 2018.)



Saint, Robert M. *St. Paul, Minn.* St. Paul, 1906. Map. Retrieved from the Library of Congress, loc.gov/item/75694650. (Accessed March 07, 2018.)