

# HashMyFiles Evaluation

*\*This is one of a series of reviews of available programs for computing and verifying checksums. The information documented below is an account of my experience and contains my own comments and opinions. Your experience may be different depending on your needs and use of the program.*

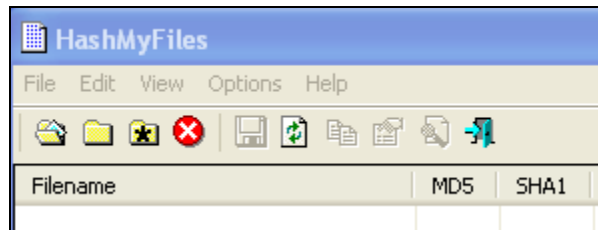
To begin, this program was downloaded from NirSoft HashMyFiles home page and installed by our company IT department onto my computer.

I began by briefly reviewing the documentation available for HashMyFiles on their website. Documentation provides a version history, system requirements, license information, and basic use instructions.

There are three ways of computing checksums; using the application, using the command line, and using it directly from within Windows Explorer (1 file only). This program calculates MD5, CRC32, SHA-1, SHA-256, SHA-512, and SHA-384 hash values.

## Using the Application

Open HashMyFiles.exe file and run the program. This opens up a window in which you can add files to for which you want to calculate checksums. One or more files can be added.



Menus and Icons for HashMyFiles

## Adding Files

To add files you can:

- You can drag and drop files and folders from a Windows Explorer window to the application (Note: contents of hierarchical folders do not transfer.)
- Click the Add Files icon and navigate to add individual files
- Click the Add Folder icon to add the contents of a folder. If you would also like to include the contents of any sub-folders you must click the "include sub-folders" box. *This is the only way to add content of hierarchical folders.*
- You can also add by wildcard. For example, selecting all of the .txt files in a selected location or all of the .pdf files in a selected location.

Once files are added, hash values are immediately calculated. One or more hash values can be calculated, methods are selected in the Options menu under Hash Type.

If you decide that you want to calculate additional hash values to a group of files that you already have in the application, you can click Refresh, and the calculations will be re-run adding in the additional values.

File...	MDS	SHA1	CRC32	SHA-256	SHA-512	SHA-384	Full Path	Modified Time	Created Time	File Size	F	Extension	File Attribu...
1961.jpg	53b986de12abd7af5779f862...	7370fce79eab1a1f3f3b17cb7...					\\walleye...	4/19/2012 9:50:...	4/19/2012 9:50:28 ...	136,481		jpg	C
1953.jpg	abd3659ad85d11d5a573849b4...	3c61cea4d475659c46d63a3c9...					\\walleye...	4/19/2012 9:44:...	4/19/2012 9:44:06 ...	199,516		jpg	C
1954.jpg	51ae169d571cdfc374b925d42...	159eafe0fa108e57ea8203a3...					\\walleye...	4/19/2012 9:44:...	4/19/2012 9:44:49 ...	299,346		jpg	C
1955.jpg	da96cb3e654811c38c7858f0e...	1e2c8a914be2c6802634715b...					\\walleye...	4/19/2012 9:45:...	4/19/2012 9:45:50 ...	127,238		jpg	C
1956.jpg	ab0b223d3550d7d52ad2fb969...	6d1d4c0b0eb95b1f09aa76d1...					\\walleye...	4/19/2012 9:47:...	4/19/2012 9:47:07 ...	124,576		jpg	C
1957.jpg	08b86e191c0e2d65659e6a838ac...	d037df9d68d53c9673b8cd67...					\\walleye...	4/19/2012 9:48:...	4/19/2012 9:47:59 ...	188,777		jpg	C
1958.jpg	a0b242548d5a316145524874...	3caf34caf25f81e51ea473f44...					\\walleye...	4/19/2012 9:48:...	4/19/2012 9:48:42 ...	212,103		jpg	C
1959.jpg	cbe7c70d0fd1d9084c6f0fae25...	fe8c604fde09ba92bf94813a...					\\walleye...	4/19/2012 9:49:...	4/19/2012 9:49:23 ...	182,139		jpg	C
1960.jpg	153e2e6a2a8271e077b798f21...	d0f0e9d84f7c410db2383c546...					\\walleye...	4/19/2012 9:50:...	4/19/2012 9:50:02 ...	191,981		jpg	C

Checksum report

### Options

Other options in the Options Menu include: marking identical hash values (these are color coded), enabling Explorer Context Menu (see below), showing hashes in upper case, extracting version information, adding a header line to CSV files, and putting a HashMyFiles icon in the tray for easy access.

File...	MDS	SHA1	CRC32	SHA-256	SHA-512	SHA-384	Full Path	Modified Time	Created Time	File Size	F	Extension	File At
eula.20...	dcd5896a9e154441cffb1d7fb5...	c32ae45927189029111e553d...					c:\eula.2...	4/11/2008 10:0...	4/11/2008 10:07:1...	3,814		txt	A
eula.30...	aid3f43f55fd38daa6236c0fccc...	21acb4d72b55d2e7df019e404...					c:\eula.3...	4/11/2008 10:0...	4/11/2008 10:07:1...	12,936		txt	A
ls86_H...	ae261a6cb7d21269f328b0c0c6...	0d98a692808975a313612d88...					c:\2009_...	10/27/2010 8:5...	11/16/2010 2:16:5...	288,949		txt	A
LICENS...	a62a5bb3e1d9a0d1d3c08a514...	768d4d8c9cfae1ecdbcc25d83...					c:\Baglt B...	7/6/2009 11:27...	6/23/2009 7:55:16 ...	166		txt	A
README...	a0d4562806dbc501f7ad9e73...	f4ea8d32524745ddca3cdc5a6...					c:\Baglt B...	7/6/2009 11:27...	6/23/2009 7:55:16 ...	3,373		txt	A
LICENS...	a62a5bb3e1d9a0d1d3c08a514...	768d4d8c9cfae1ecdbcc25d83...					c:\baglt-3...	8/25/2009 2:48...	6/23/2009 7:55:16 ...	166		txt	A
README...	a0d4562806dbc501f7ad9e73...	f4ea8d32524745ddca3cdc5a6...					c:\baglt-3...	8/25/2009 2:48...	6/23/2009 7:55:16 ...	3,373		txt	A
bag-inf...	c36a20acbec4506336489c129...	d347ba617cfffdf733afc2bbc...					c:\Baglt_...	11/16/2010 2:3...	11/16/2010 2:31:1...	76		txt	A
baglt.txt	5e9eb293148f6e98989a12398...	5316b5922e2ff90c14b63d64c...					c:\Baglt_...	11/16/2010 2:3...	11/16/2010 2:31:1...	57		txt	A
manifes...	af0bf571390ae4088bdf59ac44...	65771013816d35d5f64afb4d...					c:\Baglt_...	11/16/2010 2:3...	11/16/2010 2:31:1...	298,155		txt	A
tagmani...	2ea9cf6110b53b5172a21643b...	892cdb150eab508aea5535f75...					c:\Baglt_...	11/16/2010 2:3...	11/16/2010 2:31:1...	142		txt	A
ls86_H...	ae261a6cb7d21269f328b0c0c6...	0d98a692808975a313612d88...					c:\Baglt_...	11/16/2010 2:3...	11/16/2010 2:33:2...	288,949		txt	A
bag-inf...	47fa43a0414ad10b334f5b2c54...	80331eb749573e8dfaa19c6...					c:\Baglt_...	11/16/2010 3:1...	11/16/2010 3:13:1...	75		txt	A
baglt.txt	5e9eb293148f6e98989a12398...	5316b5922e2ff90c14b63d64c...					c:\Baglt_...	11/16/2010 3:1...	11/16/2010 3:13:1...	57		txt	A

Report showing duplicate files (color coded)

### Saving Information and Reports

Information calculated from running this program is not automatically saved. A full report that is generated after calculating hash values includes the file name, hash values of the chosen methods, the full path of the file, modified time of the file, created time of the file, file size, file version, product version, identical, extension, and file attribute.

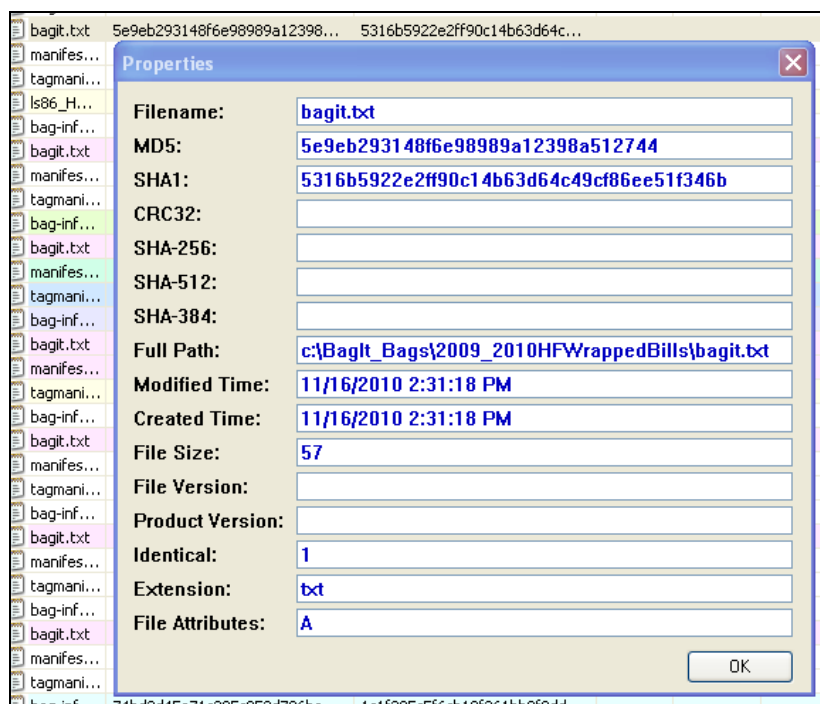
This entire report can be saved or you can choose to save only the information for selected files. If you want the entire reports to be saved, you must be sure to highlight all of the items in the report as clicking the Save icon only saves the information on the highlighted items.

The files can be saved as a text file, tab delimited text file, tabular text file (.txt), a HTML file – horizontal or vertical (.htm, .html), an XML file (.xml), or a comma delimited file (.csv). Unlike

with some other programs that automatically saved this file in the same location as the hashed files, you need to choose where to store this file.

### Other Features

- You can view the properties of an individual file by clicking properties under the File Menu. This brings up a new window with information for that item only.
- You can copy the hash values for individual files from the Edit Menu.
- You can select or deselect all from the Edit Menu.
- You can view an HTML report.
- You can choose the columns you would like to appear in your reports from the View Menu.
- You can choose to auto size the report columns from the View Menu.
- You can refresh the calculations from the View Menu.



Property Window

### Other Methods of Use

*Explorer Context Menu:* If you have enabled the Explore Context Menu in the Options Menu, you are able to run checksums from the Explorer Window on individual files. To do this, select a file in an Explorer Window, right click and choose "HashMyFiles". This will open up the program and add the file to the application and calculate the chosen hash values.

*Command Line:* You can also use the command line to specify files and folders that you want checksums calculated on. You can also specify the format in which you want to save the report. You also have an option that will allow you to sort the information in the report by a desired column.